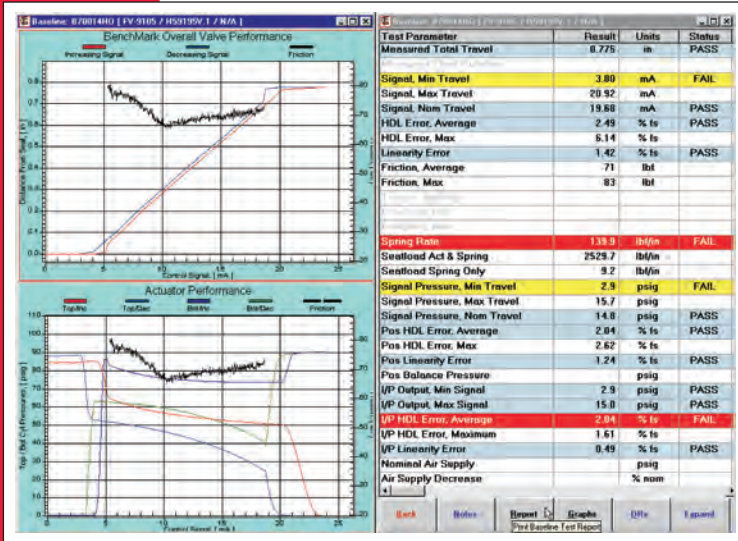


# BenchMark

## Control Valve Diagnostics



## Data MGR v6

Place the data management tools of the world's most advanced control valve diagnostics system on your desktop.

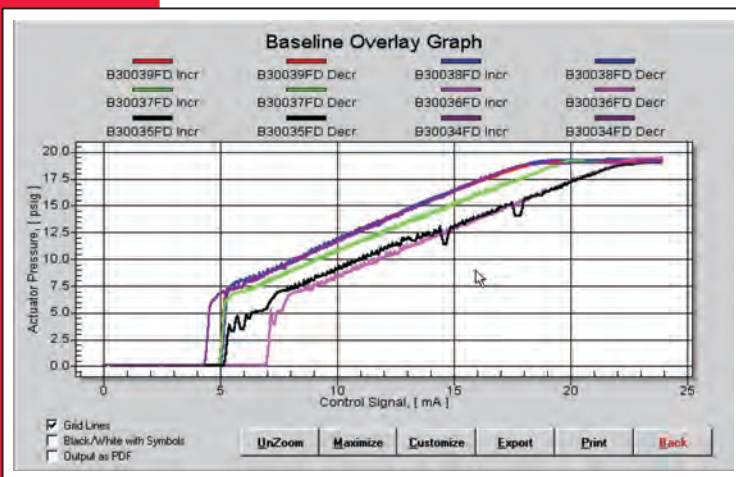
**BenchMark** Control Valve Diagnostics clearly demonstrates first-class in-line and shop valve testing isn't difficult or time consuming.

**BenchMark Data MGR** takes the same practical "no nonsense" approach to the review, trending, overlay and engineering evaluation of resulting diagnostics test data.

**Data Trending** and **Graphical Overlay** tools provide practical and powerful access to the test results, whether acquired in-house, provided by a repair vendor, an OEM valve manufacturer or converted from existing in-house diagnostic test data. Data trending helps the operator evaluate the variation of several engineering parameters as a function of test number or date/time.

Valve Identification, Configuration, Application records as well as "valve specific" performance standards can be developed, entered prior to testing and then easily transferred to the appropriate portable **BenchMark** test systems for the actual valve testing. Data from multiple test systems can be collected and managed from a single computer, if you desire.

Individual tests can be recalled, reviewed, printed and exported with all the same utility of the **BenchMark** application installed on the portable test systems.

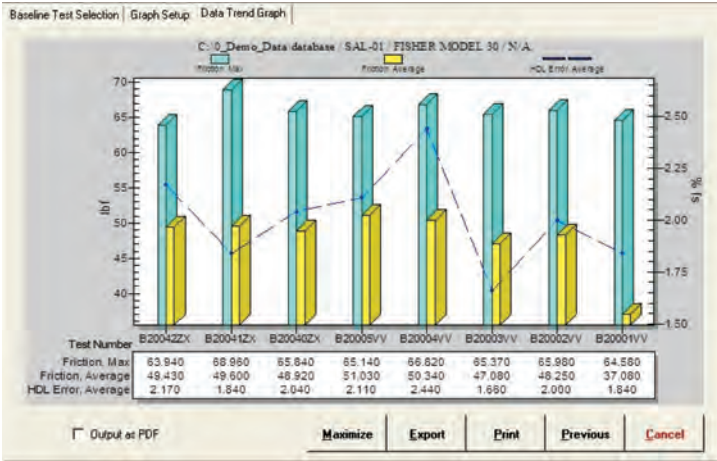


## From Your Desktop!

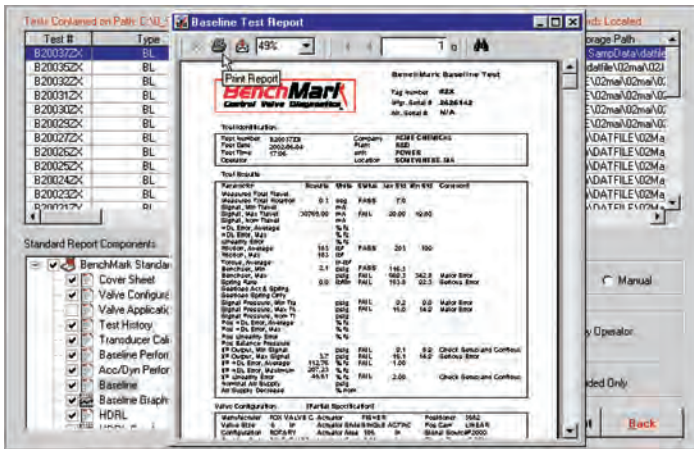
- ✓ Data Review / Trending
- ✓ Graphical Overlay
- ✓ Manage Digital Valve Tags
- ✓ Digital / Printed Reports
- ✓ Record Entry / Edit
- ✓ Data Export / Transfer
- ✓ Performance Standards

## Turning Your Test Data into Information

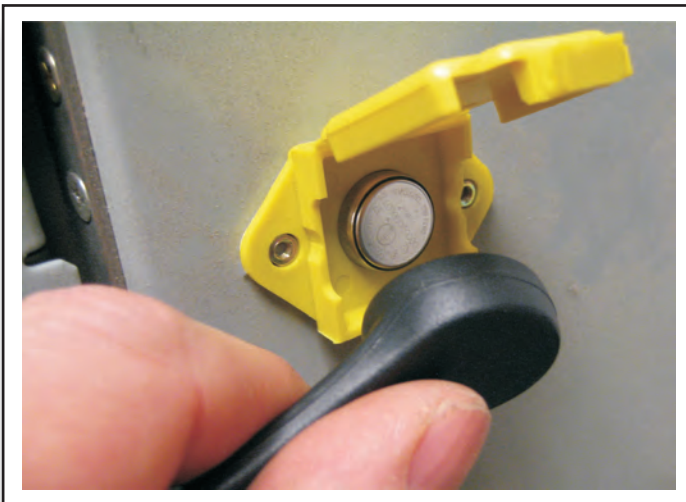




Trend Multiple Engineering Parameters



Prepare Digital or Hard-copy Reports



Manage Digital Valve Tags

For more information:

[info@blkdmdeng.com](mailto:info@blkdmdeng.com)

[www.blkdmdeng.com](http://www.blkdmdeng.com)

Black Diamond Engineering reserves the right to change or modify specifications without notice.



## Data MGR v6

### Key Functions

- Trend Test Results
- Overlay Test Graphs
- Enter / Edit Valve Records
- Recall Test Results
- Manage Digital Valve Tags
- Digital / Printed Reports
- Export Test Results
- Manage Performance Standards

This affordable software tool complements your application of **BenchMark** Control Valve Diagnostics and is not required for basic system operation.

Includes all record management, reporting and valve tag management functions of **BenchMark** and adds the additional engineering analysis tools: Graphical Overlay and Engineering Parameter Trending.

Excellent supervisory workstation software tool. Allows test systems to remain focused on valve testing.

**Data MGR v6** can be installed on PC computer with a Windows operating system (see below). Familiar and intuitive functions increase operator efficiency and minimize re-training.

### System Requirements

- PC with Windows O/S
- Windows XP™, Windows 7™ (32 or 64 bit)
- Approx. 20 MB disk space required
- USB 2.0 Port for Digital Tag Functions
- Adobe Acrobat™ for PDF Outputs



14884 So. Heritagecrest Way  
Suite B  
Bluffdale, Utah USA 84065  
(801) 256 - 0202 phone  
(801) 256 - 0217 fax

Copyright 1999-2014 Black Diamond Engineering, Inc. All Rights Reserved

BenchMark Control Valve Diagnostics and Black Diamond Engineering are trademarks of Black Diamond Engineering, Inc. Bluffdale Utah USA. All rights are reserved. All other trademarks and tradenames shown are the property of their respective owners.